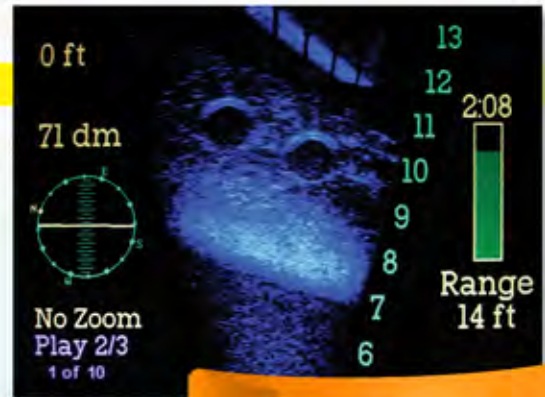


Introduces

DIDSON™ (DH)

DIVER HELD IMAGING SONAR



When the need to **SEE** is as important as the need to **KNOW!**

(as shown above)

The Images Displayed onto the Diver's Mask Indicate:

- Depth & Heading (in degrees magnetic)
- Visual of the Actual Target
- Range (in feet) between the Target and the DIDSON™ (DH)

FEATURES:

- 4 Easy to Use Thumb Switches for Power, Focus, Range, Zoom/Record
- Sensors for Compass, Roll, Pitch and Depth
- External Battery Pack for Quick Change During Extended Ops
- When Optional Cable is Attached (video/Ethernet uplink to surface)
Topside Personnel See What Diver Sees Simultaneously
- Divers Can Switch Between Sonar and Display While Underwater
- Sonar has 8GB of Memory for 4 Hrs Recording Time @ 10 Frames/Sec
- Mask-Mounted Display with Color SVGA Resolution Compatible with
AGA, SCUBA and Kirby Morgan Masks
- Mask-Mounted Display Shows Acoustic Images with Range Markers in
Feet, Meters or Yards Updated @ 4-20 Frames/Sec
- Status Indicators Measure Battery Gauge (Time Remaining in Hours),
High Temperature and Potential Leak

SCOPE OF SUPPLIES:

DIDSON™ (DH) • Manual • Underwater Head Mask Display (UHMD) with Mask Mount • 200 ft. Cable
6 ft. Data Transfer Cable Transmits Images from Sonar to Topside Computer • Battery Charger
(2) External Battery Packs • Transit Case for Sonar and Accessories • Topside Box for Remote Operation
Transit Case for Cable and Topside Box • Software CD for Topside Computer
Optional 500 ft. Cable with Ethernet Extender



Setting the Gold Standard Since 1982

For more information, call: 800-729-1122 Or visit our website at: www.royalservices.com

DIDSON™ (DH)

DIVER HELD IMAGING SONAR



- The Complete DIDSON™ (DH) System includes DIDSON™ (DH), Mask/Display, Battery Packs and Battery Charger. (Not pictured are (2) Transit Cases, Topside Box, Cable, Manual and Software CD)

SPECIFICATIONS:

• IDENTIFICATION MODE

Operating Frequency	1.8 MHz
Beamwidth (2-way)	0.3°H by 14°V
Number of Beams	96
Range	1 m - 15 m

• DETECTION MODE

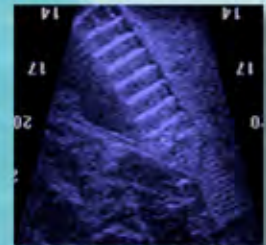
Operating Frequency	1.1 MHz
Beamwidth (2-way)	0.6°H by 14°V
Number of Beams	48
Range	1 m - 35 m

• BOTH MODES

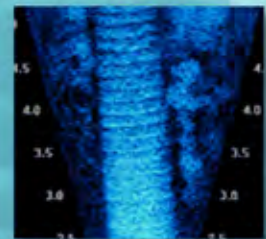
Max. Frame Rate (window length dependent)	4-20 Frames/Sec
Field-of-View	29°
Focus	1 m to Max Range
Battery Duration	2.5 Hours
Sonar Weight in Air	7.7 kg (17 lbs)
Battery Weight in Air	2 kg (4.5 lbs)
System Weight in Water	Neutral
Sonar Dimensions	43 cm by 20 cm by 17 cm (including 13 cm handle)
Battery Housing Dimensions	18 cm by 13 cm Diameter
Depth Rating	100 m (330 ft)
Control	4 Switches on Handle or Ethernet



- DIDSON™ (DH) Control Switches



- DIDSON™ (DH) Image of Steps from Submerged Platform



- DIDSON™ (DH) Image of Actual 36" Pipeline Inspection



Setting the Gold Standard Since 1982

For more information, call: **800-729-1122** Or visit our website at: **www.royalservices.com**